

RETRACTABLE BANNER STAND

Compact with modern appeal

Triad Series

Our compact Triad Retractable Banner Stand is an economical graphic display solution to give your trade show space great visual impact with a brilliant full color printed banner. The brushed aluminum base has a modern design, two swivel out base supports, chrome style end caps and clamp-style top banner rail securely holds the banner. This portable banner stand features a 1 year warranty and is manufactured with all metal base construction. Catch visitor's eye by placing your Triad next to your 8' backdrop or use one beside your table top display. Included with each Triad banner stand is a custom printed banner graphic, corded 3-section aluminum pole and soft padded carry bag for easy transport.



In-House Graphic Printing of your banner

33"



48"



EXHIBITOR IDEA!!

Utilize our Kits! Design multiple banners to be used independent for smaller show spaces or place together as a back wall for larger shows.

Quick Facts

Color: Silver

All aluminum construction

Budget friendly

Clamp style top banner rail

4-color digital printing process

1yr
warranty

Hardware
components
warranty



TR33-K1
Triad 33" Kit 1

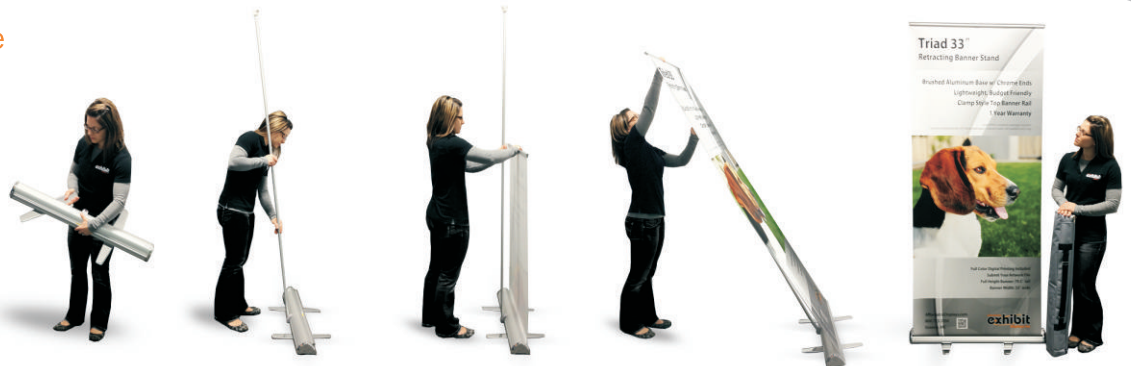


TR33-K2
Triad 33" Kit 2



TR33-K3
Triad 33" Kit 3

Set Up Sequence



RETRACTABLE BANNER STAND

Compact with modern appeal

Triad Series

The modern triangular shape to the Triad and shiny chrome end caps will add pizzazz appeal to your well designed banner graphic.

Banner material options

Standard Canvas Fabric: A lightweight, canvas-like fabric for indoor use.
Upgrade to Blockout Film: Opaque photo film for indoor use.

Unit specs

Weight: 7 lbs / 13 lbs

33" wide model Pre-packaged Kits

TR33-K1 Aluminum base w/3-section pole, 33" x 79.5"

Carry bag size Shipping box size

TR33-K2 Kit 2 - (2) Complete packages, fits in 6ft booth

Carry bag size Shipping box size

TR33-K3 Kit 3 - (2) Complete packages, fits in 8ft booth

Carry bag size Shipping box size

48" wide model Pre-packaged Kits

TR48-K1 Kit 1 - (2) Complete packages, fits in 4ft booth

Carry bag size Shipping box size

TR48-K2 Kit 2 - (2) Complete packages, fits in 8ft booth

Carry bag size Shipping box size

TR48-K3 Kit 3 - (3) Complete packages, fits in 12ft booth

Carry bag size Shipping box size

Accessories

LTBS 35-50w Halogen Stem light with snap bracket

LTBS-LED 3w LED Stem light with snap bracket

CASOCB Telescopic hard shipping case (no wheels)

*holds up to 3 33" units

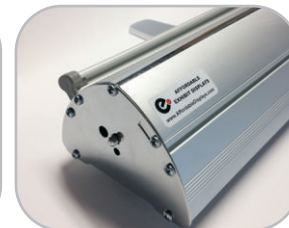
CAS1237 Wheeled roto-molded shipping case

*holds up to (4) units

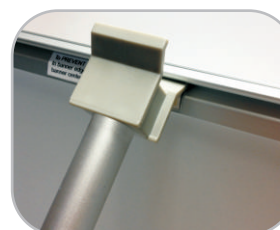
Details



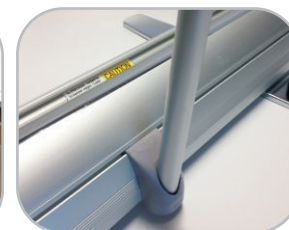
Removable chrome end cap



Matte silver finish base



Clamp top rail pole insert



Easy insert pole base



LED stem light fixture (Silver)
*Optional accessory



Halogen stem light fixture (Silver)
*Optional accessory



Included Padded carry bag

33" unit



36"h x 5"w 7 lbs packed Color: Gray

48" unit



55"h x 5"w 13 lbs packed Color: Gray

#CASOCB Optional Hard Case Holds up to 3- 33" units

31"h-47"h x 17"l x 7"w

9 lbs empty

Color: Black



#CAS1237 Optional Hard Case Holds up to 4 units



Hard Shipping Case
with wheels
Available sizes:

12" x 37"

12" x 62"