

Magnetic strips tightly link each panel together



Compact wheeled ship case & podium kit * USA made



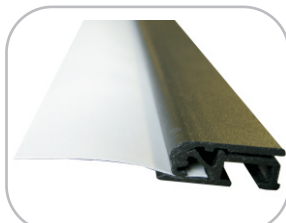
Rigid soft carry bag
*(1) per stand w/ Package #BMT20



Chrome Weighted Base
*Lifetime Warranty



Top pole inserted
*Lifetime Warranty



Gripper banner rail (closed)
No adhesive needed!



Package # BMT20-K2

*Shown with optional
Halogen stem lights

Includes 2 connected Banner-Mate Original banner stands & wheeled case w/ podium kit
*custom full color printing included

ADD Illuminating Lights - 3 Watt, 110 Volt LED Light or 35 watt 120 Volt Halogen stem light - slides into pole top - 1 per stand

Total Set up Size: 59" wide x 86" tall x 14" deep
Size per Panel: (1) 35" wide x 84.75" high & (1) 24" wide x 84.75" high

Single Case and Podium kit - Set-up as a counter: 43" h x 15" w x 17" d

Weighs approx. 10 lbs. each (packed in rigid soft bag)

Weighs approx. 42 lbs (packed in CASSRM42)

Weighs approx. 49 lbs (packed with lights & podium kit)



Package # BMT20

*Shown with optional
Halogen stem lights

Includes 2 connected Banner-Mate Original banner stands & 2 rigid soft carry bags
*custom full color printing included

ADD Illuminating Lights - 3 Watt, 110 Volt LED Light or 35 watt 120 Volt Halogen stem light - slides into pole top - 1 per stand

Total Set up Size: 59" wide x 86" tall x 14" deep
Size per Panel: (1) 35" wide x 84.75" high & (1) 24" wide x 84.75" high

Rigid Soft Carry Bag - 38" h x 6" diameter

Weighs approx. 10 lbs. each (packed in rigid soft bag)

Weighs approx. 42 lbs (packed in CASSRM42)

Weighs approx. 49 lbs (packed with lights & podium kit)