

Magnetic strips tightly link each panel together



Compact wheeled ship case & podium kit \* USA made



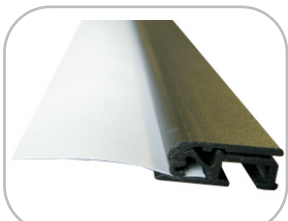
Rigid soft carry bag  
\*(1) per stand w/ Package #BMT40



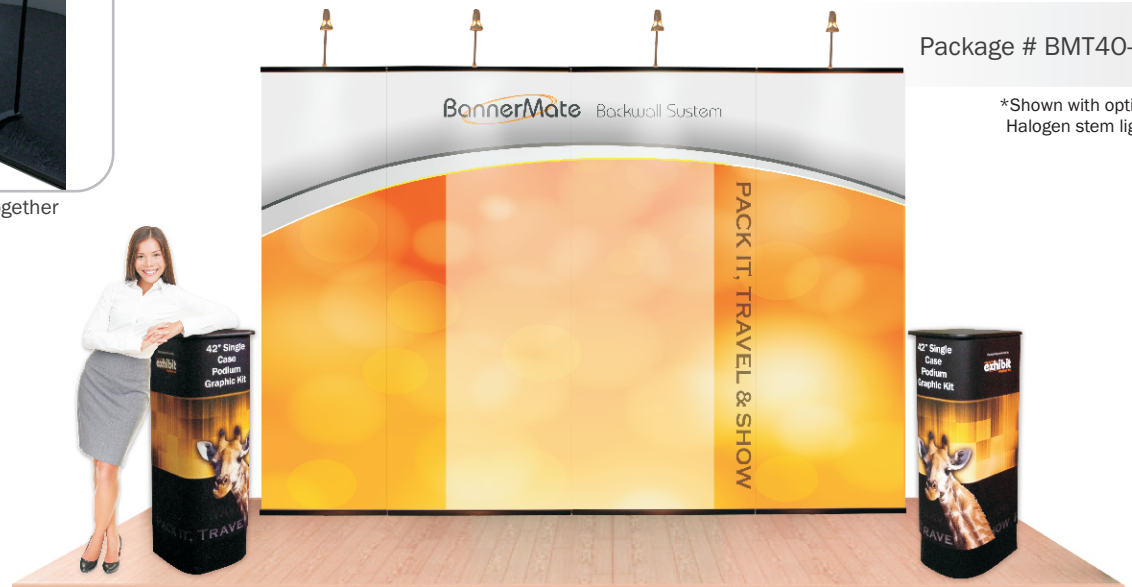
Chrome Weighted Base  
\*Lifetime Warranty



Top pole inserted  
\*Lifetime Warranty



Gripper banner rail (closed)  
No adhesive needed!



Package # BMT40-K2

\*Shown with optional Halogen stem lights

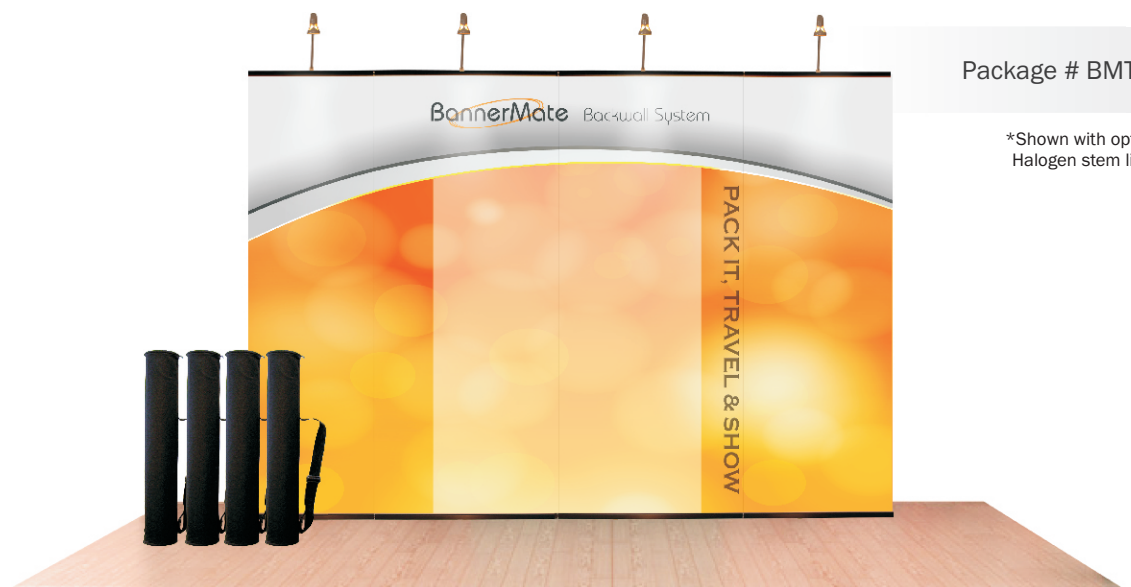
Includes 4 connected Banner-Mate Original banner stands & 2 wheeled cases w/ podium kit \*custom full color printing included

**ADD Illuminating Lights** - 3 Watt, 110 Volt LED Light or 35 watt 120 Volt Halogen stem light - slides into pole top - 1 per stand

**Total Set up Size:** 118" wide x 86" tall x 14" deep  
**Size per Panel:** (2) 35" wide x 84.75" high & (2) 24" wide x 84.75" high

**Single Case and Podium kit** - Set-up as a counter: 43" h x 15" w x 17" d

Weighs approx. 10 lbs. each (packed in rigid soft bag)  
Weighs approx. 41 lbs / 41 lbs (packed in CASSRM42)  
Weighs approx. 45 lbs / 46 lbs (packed in CASSRM42 with lights & podium)



Package # BMT40

\*Shown with optional Halogen stem lights

Includes 4 connected Banner-Mate Original banner stands & 4 rigid soft carry bags \*custom full color printing included

**ADD Illuminating Lights** - 3 Watt, 110 Volt LED Light or 35 watt 120 Volt Halogen stem light - slides into pole top - 1 per stand

**Total Set up Size:** 118" wide x 86" tall x 14" deep  
**Size per Panel:** (2) 35" wide x 84.75" high & (2) 24" wide x 84.75" high

**Rigid Soft Carry Bag** - 38" h x 6" diameter

Weighs approx. 10 lbs. each (packed in rigid soft bag)  
Weighs approx. 41 lbs / 41 lbs (packed in CASSRM42)  
Weighs approx. 45 lbs / 46 lbs (packed in CASSRM42 with lights & podium)