

### Large LCD holder

Item.no IS-80-TM03

VESA 400x200

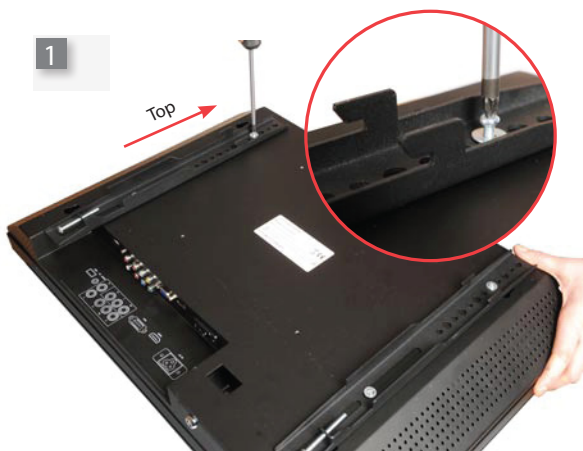
Max weight. 20 kg / 44 lbs

Complete with:  
2 horizontal beams with LCD holder, 2 rails  
for LCD, screws for mount of the LCD.

Can be used with the  
Wave, Compact and  
Exhibit system .



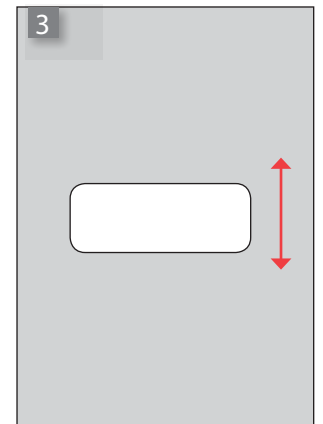
Note: LCD brackets may vary based on availability.  
Be sure to follow additional inclosed instructions for  
attachment to your TV/LCD screen.



Attach the 2 rails on the LCD screen



Attach the LCD holder in the system  
with the 4 FASTclamp locks.



Cut an opening in the graphic panel in the  
size of 520 x 220 mm / 20 1/2 x 8.7"  
(or to fit bracket provided)



Attach the graphic panels



Hook on the LCD



Lock the LCD with the two screws in  
the bottom of the screen rails!